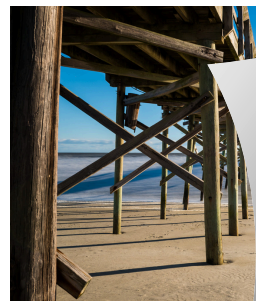
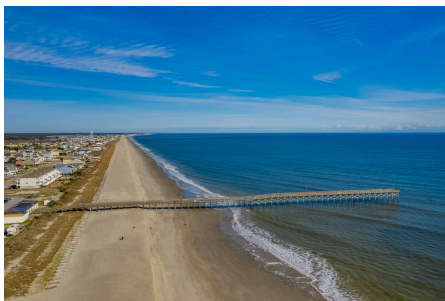




EXPLORE STANBURY CREEK *with* **LIVE LOVE**



A NEW HOME COMMUNITY *by* **DR HORTON**





HOLDEN BEACH MAINLAND





Legend

-  Mailboxes
-  Model

 Map is for presentation purposes only. Not drawn to scale.

THE COMMUNITY

STANBURY CREEK • SUPPLY, NC

LOCATION

760 Twinstead Road SW, Supply, NC,
28462
Brunswick County

DIRECTIONS

From Hwy 17 N turn right onto Red Bug Rd SW, then turn left onto NC-130 E/ Holden Beach Rd Sw. Continue and then turn left onto Stanbury Rd SW.

GENERAL INFORMATION

Stanbury Creek consist of 180 total lots and offers 10 Single Family floor plans, both, one-level ranch style homes and two story traditional styled homes ranging from 1045 to 2338 Heated Sq. Ft. The model home is an Aria H on homesite number 174

COMMUNITY FEES

HOA monthly dues are \$115.
HOA dues cover maintenance of common areas and internet (pool coming soon!). A one time capital contribution fee of \$1,500 is paid at closing.

SHOPPING/ POINTS OF INTEREST

Holden Beach 6 Minutes

Southport 35 Minutes

The Sea Biscuit Cafe
Sonja's Grill
Purple Onion Cafe
Oak and Anchor Restaurant
Wing & Fish Company
The Cove Restaurant
Ferry Landing Park
Oak Island Lighthouse
Sunset Market & Art Gallery
Belk
Hobby Lobby
Food Lion
Walgreens
Lockwood Folly Country Club

SCHOOLS

Virginia Williamson Elementary
910-756-6010
Cedar Grove Middle School
910-756-6120
Brunswick County Early College High School
910-756-5030
West Brunswick High School
910-756-5050

UTILITIES

Brunswick Water & Sewer
910-253-2655
FOCUS Cable/Internet/Phone
910-754-4311
BEMC Brunswick Electric
910-754-4391

HOSPITALS/HEALTH CARE

Novant Health Brunswick Medical Center
910-721-1000
Brunswick Veterans Outreach VA Clinic
910-754-6141
Brunswick Senior Center at Supply
910-754-2300

GOVERNMENT

Brunswick County Sherriff
910-253-2777
Tri-Beach VFD Station 1
910-842-2333
Post Office
910-754-4050
Animal Control
910-754-8204
Southwest Brunswick Branch Library
910-579-0173

MISCELLANEOUS

GFL Environmental—Brunswick Waste and Recycling
910-253-4177
Brunswick Animal Hospital
910-939-2393
Brunswick County Chamber of Commerce
910-754-6644
Clerk of Court
910-253-3900
State Highway Patrol
910-733-7952
Brunswick Plantation Golf
910-287-4994

HOA- MANAGEMENT COMPANY

PMC Premier Management Company
P.O. Box 12051, Wilmington, NC 28405
Rob Dunham 910-679-3012 x 715

LENDER

DHI Mortgage
Andrew Reid
843-331-4523
amreid@dhimortgage.com

ATTORNEY

Nelson & Galbreath LLC
780 US-17 BUS Unit D
Surfside Beach, SC 29575
843-913-8694



Subject to changes. Home and community information, including pricing, included features, terms, availability and amenities, are subject to change and prior sale at any time without notice or obligation. Square footage dimensions are approximate. Buyer should conduct his or her own investigation of the present and future availability of school districts and school assignments. D.R. Horton has no control or responsibility for any changes to school districts or school assignments should they occur in the future. HOA dues are subject to change as provided in the recorded declaration.

D-R-HORTON
America's Builder

© Copyright 2023 D.R. Horton, Inc.

HOME INVENTORY

STANBURY CREEK • SUPPLY, NC

PLAN	LOT	STREET ADDRESS	FRONT ELEVATION	STAGE/ESTIMATED COMPLETION DATE	PRICE
ARIA H	44	984 Stanbury Bluff Road SW	3/2	PENDING	\$320,190
DOVER	46	1000 Stanbury Bluff Road SW	3/2	June 19, 2026	\$330,205
ARIA L	47	1016 Stanbury Bluff Road SW	3/2	November 24, 2025	\$299,990
WREN B	48	1024 Stanbury Bluff Road SW	5/3.5	March 6, 2026	\$348,990
DOVER A	50	1036 Stanbury Bluff Road SW	4/3	PENDING	\$363,990
CALI B	53	1050 Stanbury Bluff Road SW	4/2	PENDING	\$323,190
GALEN	78	1065 Stanbury Bluff Road SW	3/2.5	May 4, 2026	\$332,573
WREN B	79	1059 Stanbury Bluff Road SW	5/4.5	May 28 2026	\$367,070
GALEN A	80	1055 Stanbury Bluff Road SW	4/2.5	May 28 2026	\$335,855
ARIA H	82	1047 Stanbury Bluff Road SW	3/2	January 6, 2026	\$306,990
ARIA	85	1035 Stanbury Bluff Road SW	3/2	June 16, 2026	\$305,190
CALI C	87	1027 Stanbury Bluff Road SW	4/2	PENDING	\$329,190
ARIA B	91	1009 Stanbury Bluff Road SW	3/2	April 20, 2026	\$319,790
ARIA	99	971 Stanbury Bluff Road SW	3/2	June 29, 2026	\$301,190
DOVER	100	967 Stanbury Bluff Road SW	4/3	July 17, 2026	\$359,750
KERRY	102	1095 Woods Crossing Road SW	3/2	July 17, 2026	\$284,735
ARIA	150	1083 Woods Crossing Road SW	3/2	July 17, 2026	\$300,190
ARIA H	160	1033 Woods Crossing Road SW	3/2	TBD - PERMIT	\$315,190
CALI S	162	1025 Woods Crossing Road SW	4/2	PENDING	\$321,190



CLICK OR SCAN FOR HOME INVENTORY VIDEO PLAYLIST



THE ARIA

STANBURY CREEK • SUPPLY, NC

PLAN	LOT	STREET ADDRESS	FRONT ELEVATION	STAGE/ESTIMATED COMPLETION DATE	PRICE
ARIA	85	1035 Stanbury Bluff Road SW	3/2	June 16, 2026	\$305,190
ARIA	99	971 Stanbury Bluff Road SW	3/2	June 29, 2026	\$301,190
ARIA	150	1083 Woods Crossing Road SW	3/2	July 17, 2026	\$300,190
ARIA B	91	1009 Stanbury Bluff Road SW	3/2	April 20, 2026	\$319,790
ARIA H	44	984 Stanbury Bluff Road SW	3/2	PENDING	\$320,190
ARIA H	82	1047 Stanbury Bluff Road SW	3/2	January 6, 2026	\$306,990
ARIA H	160	1033 Woods Crossing Road SW	3/2	TBD - PERMIT	\$315,190
ARIA L	47	1016 Stanbury Bluff Road SW	3/2	November 24, 2025	\$299,990



**CLICK OR SCAN FOR VIDEO TOUR
OF THE ARIA IN STANBURY CREEK**



1618 SQ. FT. | 3 BED 2 BATH 1 STORY 2 CAR



Elevation A



Elevation B



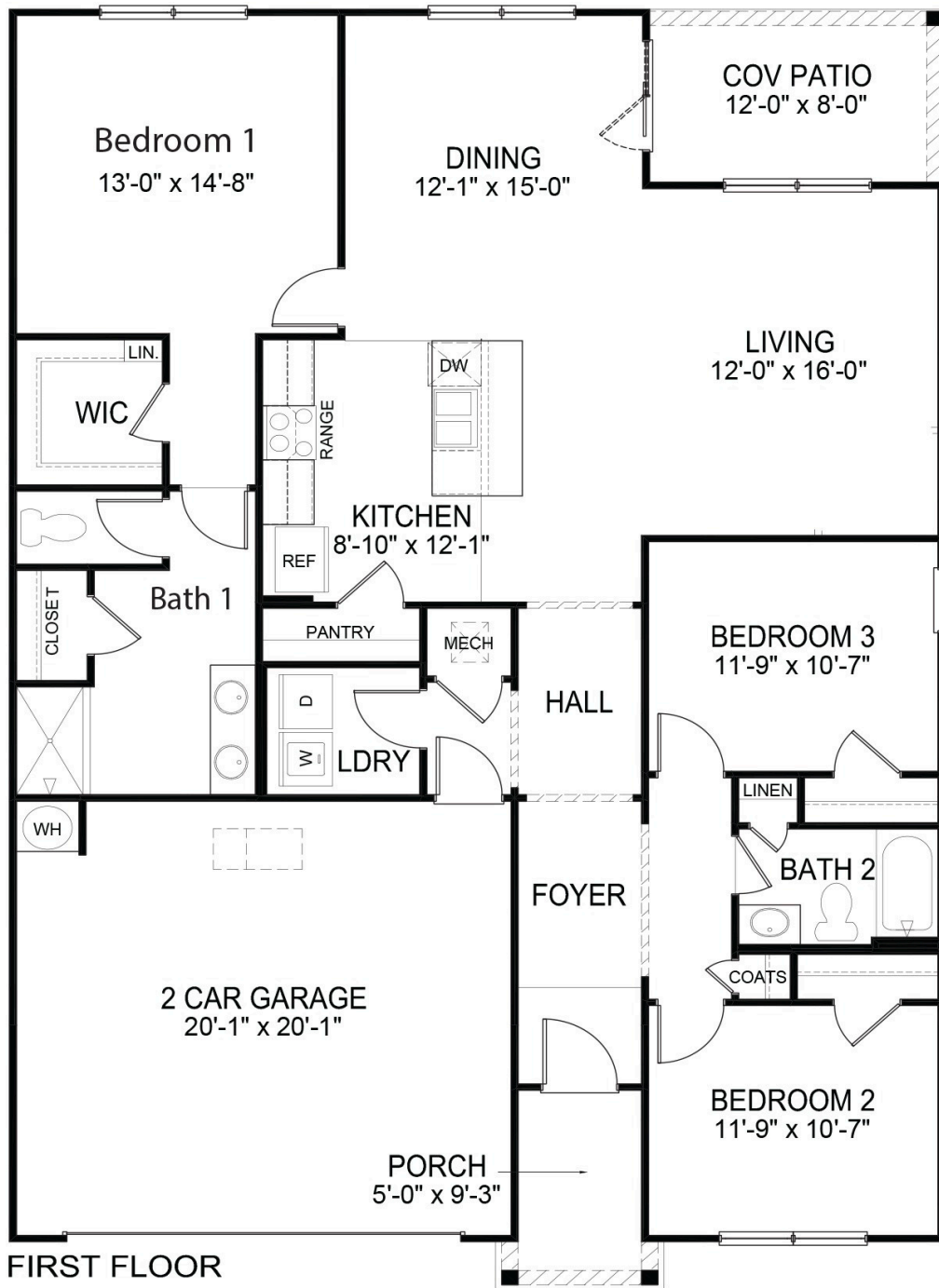
Elevation C



Elevation H

D.R. Horton is an Equal Housing Opportunity Builder. Home and community information, including pricing, included features, terms, availability and amenities, are subject to change and prior sale at any time without notice or obligation. Pictures, photographs, colors, features, and sizes are for illustration purposes only and will vary from the homes as built. Square footage dimensions are approximate. Buyer should conduct his or her own investigation of the present and future availability of school districts and school assignments. D.R. Horton has no control or responsibility for any changes to school districts or school assignments should they occur in the future. Rendering 2.26.24update.





Jde-1618
1.4.24 Update
11.11.22 Plan



THE CALI

STANBURY CREEK • SUPPLY, NC

PLAN	LOT	STREET ADDRESS	FRONT ELEVATION	STAGE/ESTIMATED COMPLETION DATE	PRICE
CALI B	53	1050 Stanbury Bluff Road SW	4/2	PENDING	\$323,190
CALI C	87	1027 Stanbury Bluff Road SW	4/2	PENDING	\$329,190
CALI S	162	1025 Woods Crossing Road SW	4/2	PENDING	\$321,190



**CLICK OR SCAN FOR VIDEO TOUR
OF THE CALI IN STANBURY CREEK**



Home and community information, including pricing, included features, terms, availability and amenities, are subject to change and prior sale at any time without notice or obligation. **Not all buyers will qualify. This flyer is for information purposes only and is not part of a legal contract.

1774 SQ. FT. | 4 BED 2 BATH 1 STORY 2 CAR



Elevation A



Elevation B



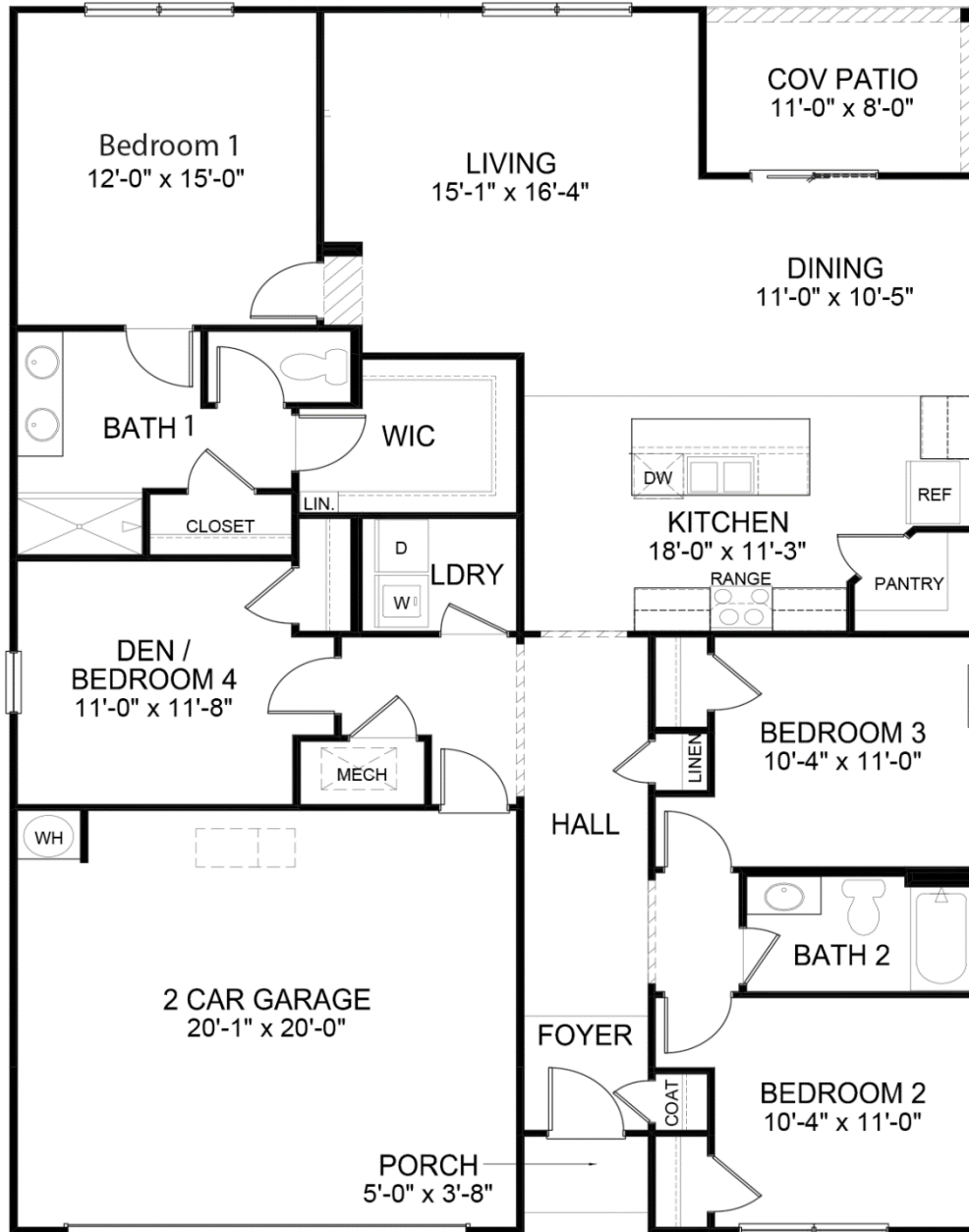
Elevation C



Elevation S

D.R. Horton is an Equal Housing Opportunity Builder. Home and community information, including pricing, included features, terms, availability and amenities, are subject to change and prior sale at any time without notice or obligation. Pictures, photographs, colors, features, and sizes are for illustration purposes only and will vary from the homes as built. Square footage dimensions are approximate. Buyer should conduct his or her own investigation of the present and future availability of school districts and school assignments. D.R. Horton has no control or responsibility for any changes to school districts or school assignments should they occur in the future. Rendering 2.26.24 update.





Jde-1774
11.11.22 Update
11.11.22 Plan



THE DOVER

STANBURY CREEK • SUPPLY, NC

PLAN	LOT	STREET ADDRESS	FRONT ELEVATION	STAGE/ESTIMATED COMPLETION DATE	PRICE
DOVER	46	1000 Stanbury Bluff Road SW	3/2	June 19, 2026	\$330,205
DOVER	100	967 Stanbury Bluff Road SW	4/3	July 17, 2026	\$359,750
DOVER A	50	1036 Stanbury Bluff Road SW	4/3	PENDING	\$363,990



**CLICK OR SCAN FOR VIDEO TOUR OF
THE DOVER IN STANBURY CREEK**



1883-2368 SQ. FT. | **3-5** BED **2-3** BATH **1-1.5** STORY **2** CAR




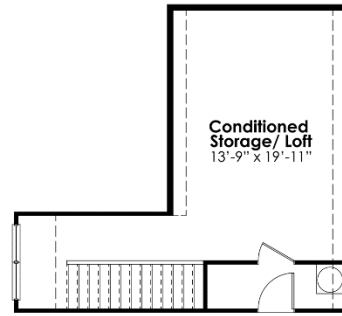
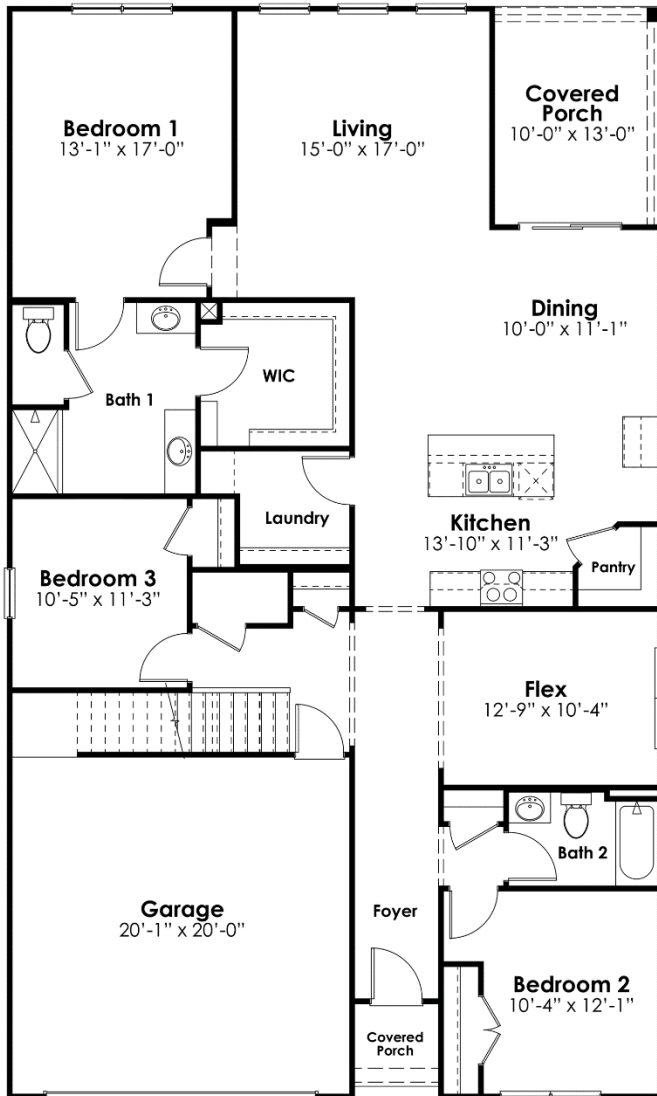
Elevation A



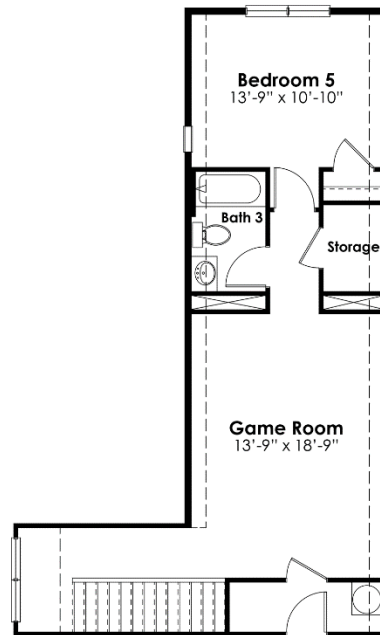
Elevation C

D.R. Horton is an Equal Housing Opportunity Builder. Home and community information, including pricing, included features, terms, availability and amenities, are subject to change and prior sale at any time without notice or obligation. Pictures, photographs, colors, features, and sizes are for illustration purposes only and will vary from the homes as built.

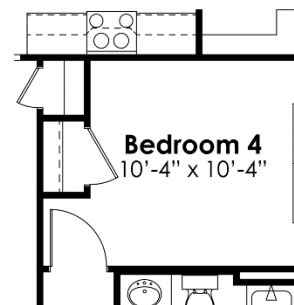
Square footage dimensions are approximate. Buyer should conduct his or her own investigation of the present and future availability of school districts and school assignments. D.R. Horton has no control or responsibility for any changes to school districts or school assignments should they occur in the future. Rendering 1.17.24 Update 



Optional Conditioned Storage



Opt Bed 5 / Bath 3 w/ Game Room



Optional Bed 4 ILO Flex Space



THE GALEN

STANBURY CREEK • SUPPLY, NC

PLAN	LOT	STREET ADDRESS	FRONT ELEVATION	STAGE/ESTIMATED COMPLETION DATE	PRICE
GALEN	78	1065 Stanbury Bluff Road SW	3/2.5	May 4, 2026	\$332,573
GALEN A	80	1055 Stanbury Bluff Road SW	4/2.5	May 28 2026	\$335,855



**CLICK OR SCAN FOR VIDEO TOUR OF
THE GALEN IN STANBURY CREEK**



2338 SQ. FT. | 4 BED 2.5 BATH 2 STORY 2 CAR



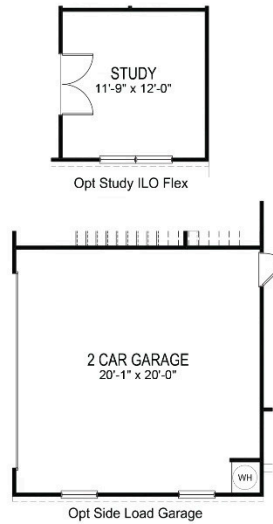
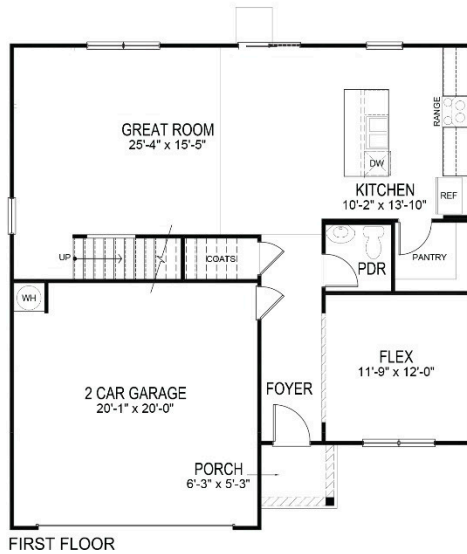
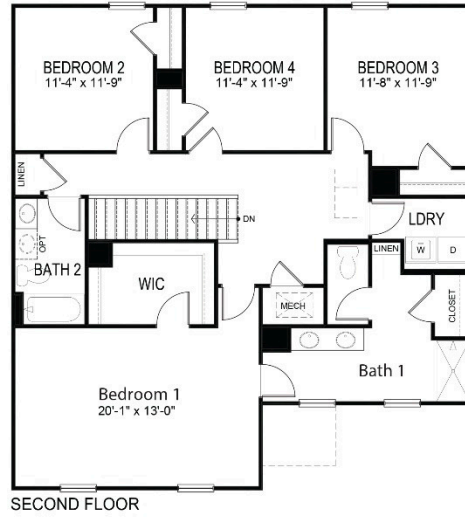
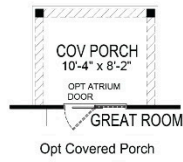
Elevation A



Elevation B

D.R. Horton is an Equal Housing Opportunity Builder. Home and community information, including pricing, included features, terms, availability and amenities, are subject to change and prior sale at any time without notice or obligation. Pictures, photographs, colors, features, and sizes are for illustration purposes only and will vary from the homes as built.

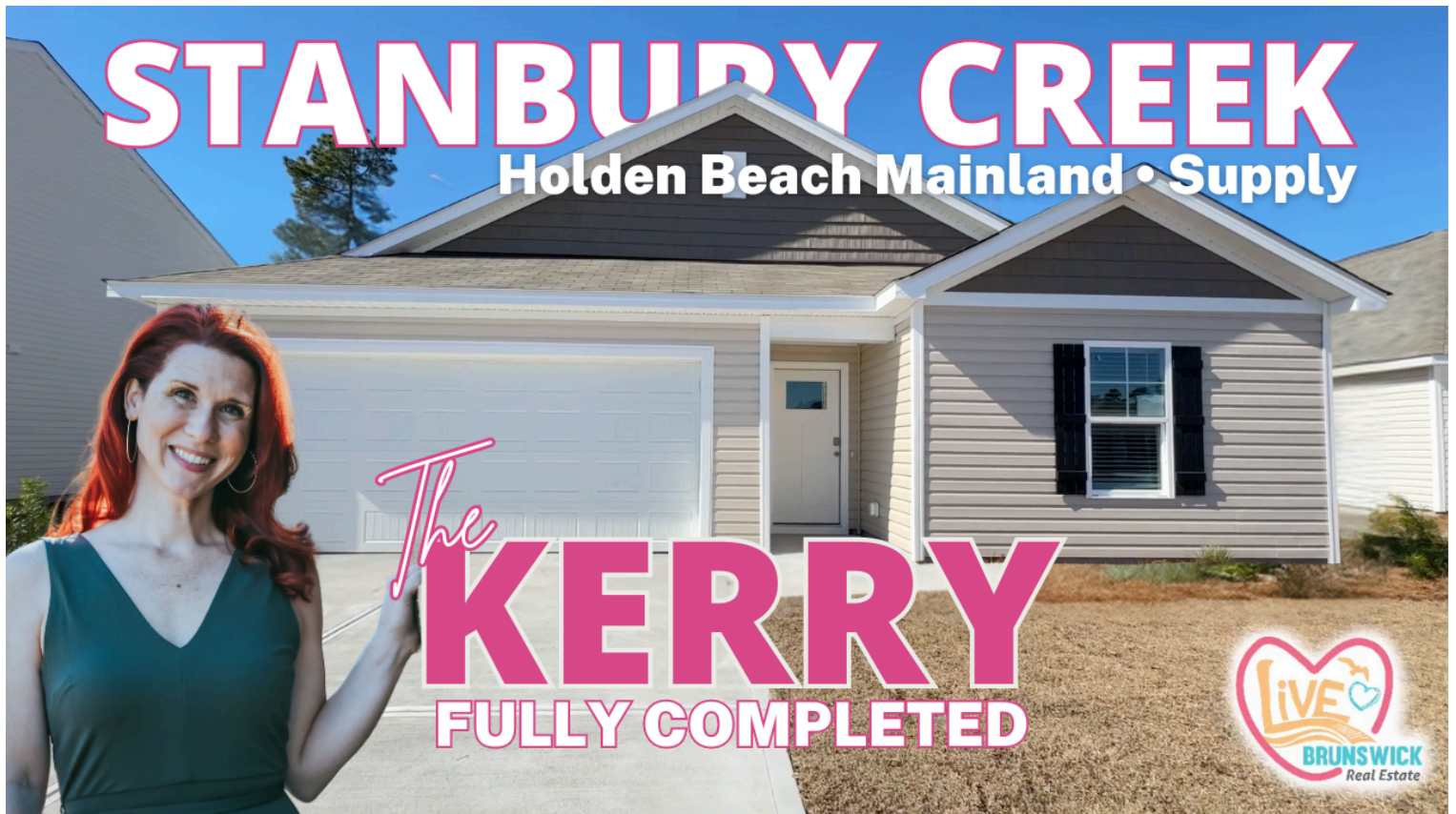
Square footage dimensions are approximate. Buyer should conduct his or her own investigation of the present and future availability of school districts and school assignments. D.R. Horton has no control or responsibility for any changes to school districts or school assignments should they occur in the future. 2.26.24 Update



THE KERRY

STANBURY CREEK • SUPPLY, NC

PLAN	LOT	STREET ADDRESS	FRONT ELEVATION	STAGE/ESTIMATED COMPLETION DATE	PRICE
KERRY	102	1095 Woods Crossing Road SW	3/2	July 17, 2026	\$284,735



**CLICK OR SCAN FOR VIDEO TOUR OF
THE KERRY IN STANBURY CREEK**



1475 SQ. FT. | 3 BED 2 BATH 1 STORY 2 CAR



Elevation A




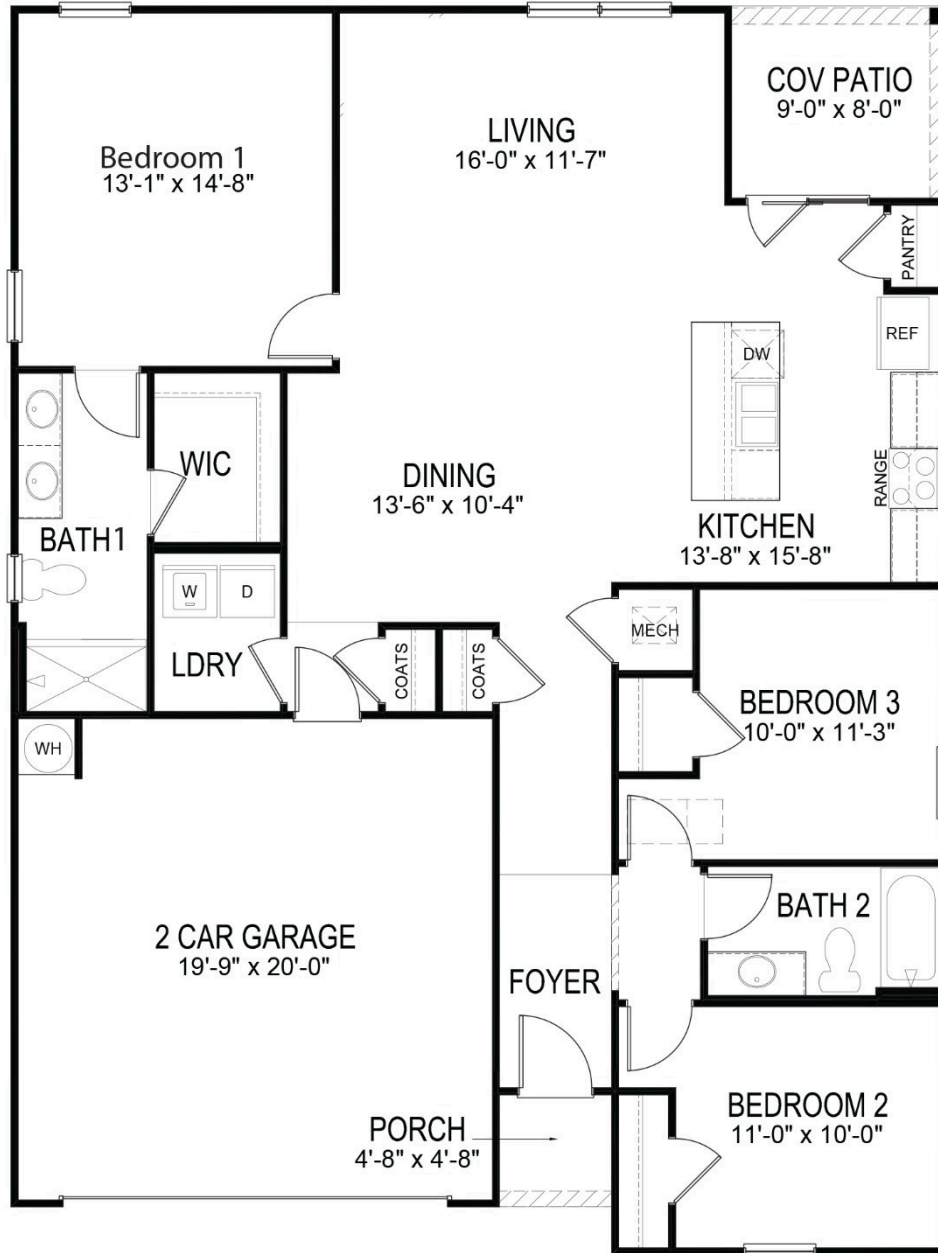
Elevation B



Elevation E

D.R. Horton is an Equal Housing Opportunity Builder. Home and community information, including pricing, included features, terms, availability and amenities, are subject to change and prior sale at any time without notice or obligation. Pictures, photographs, colors, features, and sizes are for illustration purposes only and will vary from the homes as built.

Square footage dimensions are approximate. Buyer should conduct his or her own investigation of the present and future availability of school districts and school assignments. D.R. Horton has no control or responsibility for any changes to school districts or school assignments should they occur in the future. 2.26.24 Update 



Jde-1476
1.4.24 Update
11.11.22 Plan

THE WREN

STANBURY CREEK • SUPPLY, NC

PLAN	LOT	STREET ADDRESS	FRONT ELEVATION	STAGE/ESTIMATED COMPLETION DATE	PRICE
WREN B	48	1024 Stanbury Bluff Road SW	5/3.5	March 6, 2026	\$348,990
WREN B	79	1059 Stanbury Bluff Road SW	5/4.5	May 28 2026	\$367,070



**CLICK OR SCAN FOR VIDEO TOUR OF
THE WREN IN STANBURY CREEK**



2583 SQ. FT. | 4 BED 3.5 BATH 2 STORY 2 CAR



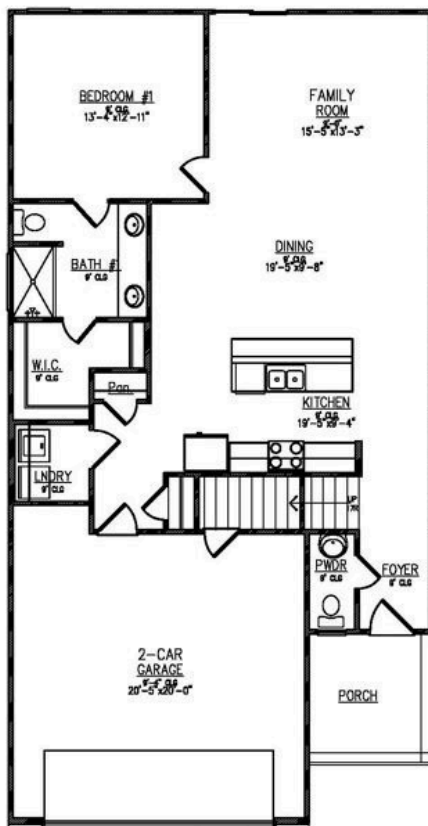
Elevation A



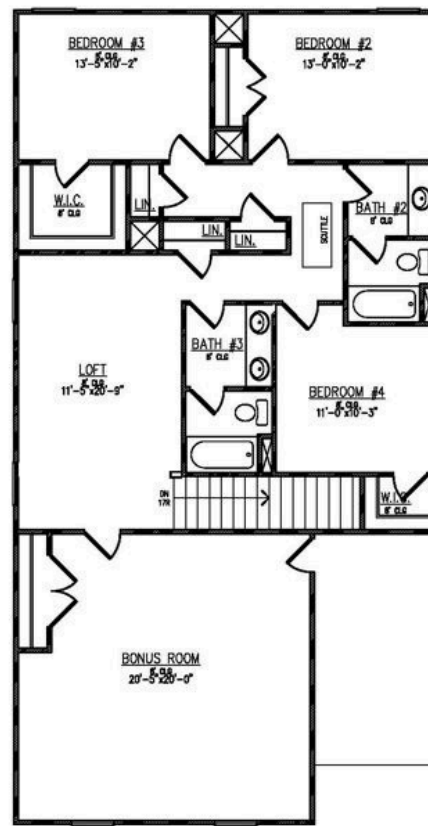
Elevation B

D.R. Horton is an Equal Housing Opportunity Builder. Home and community information, including pricing, included features, terms, availability and amenities, are subject to change and prior sale at any time without notice or obligation. Pictures, photographs, colors, features, and sizes are for illustration purposes only and will vary from the homes as built.

Square footage dimensions are approximate. Buyer should conduct his or her own investigation of the present and future availability of school districts and school assignments. D.R. Horton has no control or responsibility for any changes to school districts or school assignments should they occur in the future. 2.26.24 Update



First Floor



Second Floor



EXPRESS LEVEL INCLUDED FEATURES

STANBURY CREEK • SUPPLY, NC

OUTSIDE

Exterior Finish: Low maintenance vinyl siding
Fascia: Aluminum | Soffit: vinyl, ventilated
Garage Door: Steel garage door (per plan)
Garage Finish: Paint ready drywall finish
Attic Access: Location varies per plan
Landscaping: Professional landscaping package (per plan)
Shingles: Fiberglass 3 Tab with 25-yr. manufacturer warranty
Termite Treatment: Annual, renewable bond

INSIDE

Cable Outlet Locations: Family room, all bedrooms
Ceiling Fan Prewire: Family room, bedrooms with light switch
Ceiling-Height: 8' smooth ceilings
Doors-Front: Insulated smooth fiberglass
Doors-Interior: 2 panel colonial, satin nickel hardware
Floors-Carpet: 5 lb. pad, bedrooms, stairs, 2nd floor
Floors-Vinyl: Foyer, kitchen and main living 1st floor, baths
GFI Outlet: Located in all designated wet areas (per plan)
Laundry Room: Interior, w/ washer & (electric) dryer connection
Lighting: LED flush mount in kitchen/living, bedrooms, foyer, and baths
Phone Outlet Location: Primary bedroom and kitchen
Smoke Detector: Hardwired with battery backup (per code)
Trim: 3 1/4" baseboard, 2 1/4" colonial door casings/
Window Treatments: 2" faux-wood blinds on all standard windows (does not include sliding door)

HOME IS CONNECTED**

Alexa® Voice Control: (1) Amazon Echo Dot
Front Door Bell: Video doorbell + App control
Home Hub: Qolsys® IQ2 touchscreen panel + App control
Light Switch: Deako switches throughout home
Thermostat: Honeywell® T6 Pro + App control
Door Lock: Quickset Smartcode keyless entrypad

**SEE SALES AGENT FOR EXPLANATION OF INSTALLATION AND CONNECTION; SOME ITEMS INSTALLED POST-CLOSING

KITCHEN

Countertop: Low maintenance laminate with 4" splash
Cabinets: 36" height
Faucet: Chrome, one handle with pull-out sprayer
Garbage Disposal: 1/2 horsepower
Sink: stainless steel, double bowl, 50/50

APPLIANCES

Dishwasher: Stainless steel
Microwave: Stainless steel
Range: Stainless steel

BATHROOMS

Closet Shelving: Ventilated shelving
Exhaust Fan: In all baths
Faucets: Chrome finish
Mirrors: Plate glass, above each sink, all full bathrooms
Bath 1: 5' walk-in shower
Secondary Bath(s): Tub/shower combination
Toilets: water-saving
Powder Room (per plan): Pedestal sink
Vanity Top: Laminate top with porcelain sink
Cabinet: Raised height double bowl in bath 1 (per plan availability); single bowl hall baths standard (double-bowl optional per plan)

ENERGY SAVING FEATURES

Exterior Electrical Outlets: 2, weatherproof
Exterior Hose Bibs: 2, freeze resistant
Exterior Walls: Quality Green Guard® House Wrap
HVAC: 15-SEER heat pump with digital programmable thermostat
Insulation: Attic-R-38 (vaults per plan R-19); exterior walls R-15
Sliding Doors: Vinyl, double-pane
Water Heater: 50 gallon tank; 3 or more full baths, (2) 50 gallon tanks
Windows: Vinyl, double pane, low-E glass
Foundation: Engineered reinforced concrete with wire mesh and rebar
Efficiency: Third-party tested and certified for house leakage, under pressure duct leakage, and air supply with blower door test

Home and community information, including pricing, included features, terms, availability and amenities, are subject to change and prior sale at any time without notice or obligation. This flyer is for information purposes only and is not part of a legal contract. Revised 9/13/23

D·R·HORTON
America's Builder

D·R· HORTON • EXPRESS • EMERALD • FREEDOM





**STOP LOOKING.
START FINDING.**



**BUILDERSUP.COM
BUILDERSUP.COM
BUILDERSUP.COM**

910-777-LIVE